



Cute benchtop

As wide as an A4 paper

The occupied space is smaller than an iPad pro on the table.
Place it as you like.

The body width is only
208 mm

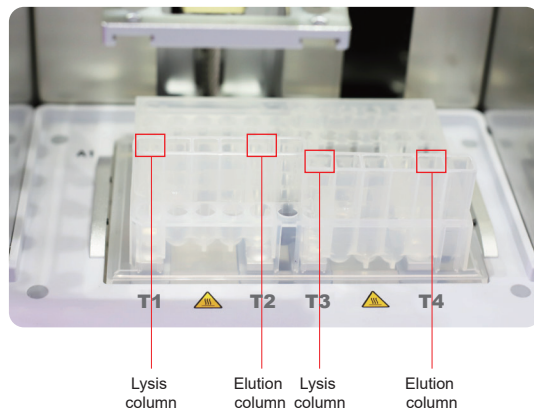


The size of iPad Pro 2021 is 214.6 mm*280.6 mm.
The short side length of A4 paper is 210 mm.

Optimal design of heating tank

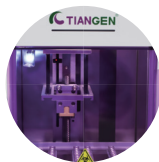
Lysis/elution separated

There is a column inserted between the lysis buffer and the eluent column, which effectively avoids the eluent evaporation caused by the lysis column heating. Therefore, the recovery volume of the nucleic acid solution is more accurate.



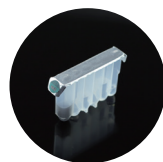
Contamination control and operator protection

It can be placed in the clean bench or chemical hood. The instrument is running in an automatic and closed way.



The contamination control system adopts two mechanisms: the internal cross-contamination control system and ultraviolet sterilization system, to double avoid cross-contamination between columns and samples.

Preloaded reagents and matched disposable consumables



The chemical handling is eliminated to the greatest extent to ensure the operation safety.

Silent working mode

≈ 40 dB (Ultra low)

Noise reduction technology eliminates the disturbance in the laboratory.



Comfortable experience

Touch screen stands at 45-degree for your comfortable operation

Ergonomic design



TGuide S16 Nucleic Acid Extractor

Make Purification Easier

Automated Extraction
DNA
RNA





Various applicable sample types

TGuide S16 is an affordable choice for academic or small labs to automate nucleic acid extraction from agarose gel, PCR product, plant and animal tissue, etc.



Pretreatment process stays familiar

Compatible with various pretreatment methods



Liquid nitrogen grinding



Mobile electronic grinder



Tissue homogenizer

Save time for inspiration and innovation

With minimal sample preparation time, you will be freeing up for other important work.

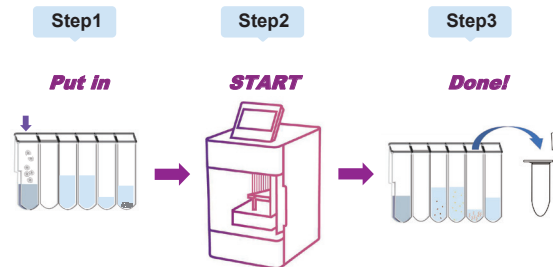
- TGuide Smart Magnetic Tissue DNA Kit
- TGuide Smart Magnetic Plant DNA Kit
- TGuide Smart Soil /Stool DNA Kit
- TGuide Smart DNA Purification Kit
- TGuide Smart Blood/Cell/Tissue RNA Kit
- TGuide Smart Magnetic Plant RNA Kit

Save your energy for innovative work. Leave the hands-on experiment to this assistant!



It can play the role as a true laboratory workhorse, better at the highly repetitive work than human is.

Super easy to use



No extra pipetting work. The elution volume can be adjusted as required.



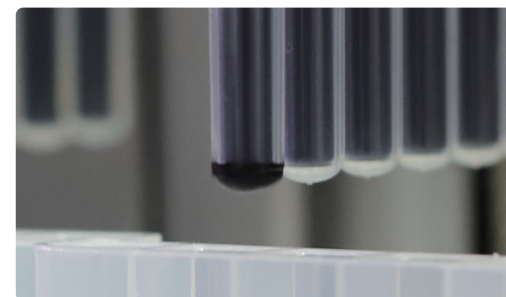
Intuitive touch screen interface
Few touch points to start

The installation and operation require little training. With pre-installed programs, unpack the cartridge, select the protocol and run your experiment. Programs are ready-to-use, and also customizable.

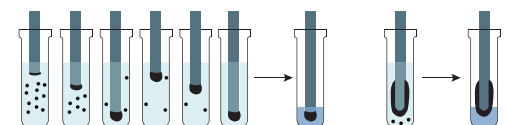
New binding mode

Strong end binding mode

The magnetic rod adopts the strong end binding mode. The magnetic beads bind at the rod bottom, which ensures that the eluent can still cover all magnetic beads even when the eluent volume is small. The design maximizes the yield of nucleic acid.



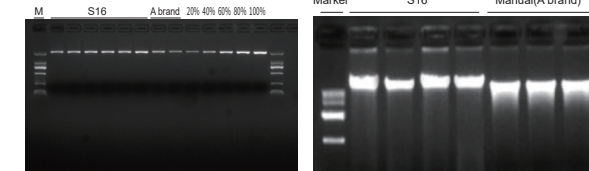
Cyclic binding mode Conventional binding mode



Your reliable assistant

S16 performs equal or better than manual kits.

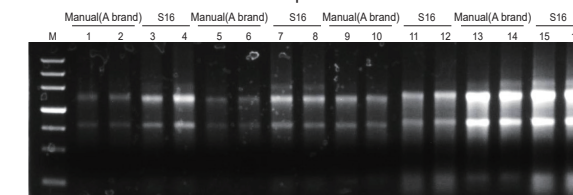
Gel recovery experiment (2 Kb) Plant (wheat root) DNA extraction experiment



The recovery rate is consistent and slightly higher than that of the manual column extraction kit (international brand A).

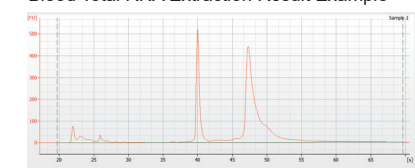
The yield is consistent, and the DNA integrity is better than of the manual column extraction kit (international brand A).

Animal tissue RNA extraction experiment



Loading volume: 1 µl. The liver was diluted 5 times and loaded. Agarose gel concentration: 1%. Electrophoresis for 20 min at 6 V/cm; M: TIANGEN Marker III 1-4: heart 5-8: liver 9-12: lung 13-16: kidney The first two samples of each tissue were extracted by the spin-column based extraction kit, and the last two were extracted automatically by TGuide S16. Sample source: CD-1 mice

Blood Total RNA Extraction Result Example



S16 was used to extract RNA from fresh whole blood of mice, and Agilent 2100 was used for integrity detection, with RIN=10.

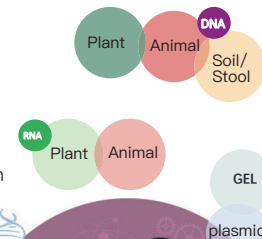
Recruiting test users

TIANGEN provides: Free of charge

Test instruments and reagent kits

We ask you for

- Repeated experiments with more than 3 samples
- Completed test reports with results and comments



Reports are registered by sample and nucleic acid types. Each test user can submit several test reports for different experiments. We're very looking forward to your participation!