

## Preserve the structural and signal integrity of the cellular proteins

IntactProtein™ Cell-Tissue Lysis Kit includes a uniquely formulated protein lysis and extraction buffer mix. This innovative and proprietary reagent mix will greatly facilitate researchers to extract proteins of all sizes from both cultured mammalian tissues and cells.

### Key Features

- **All-in-one formula:** No protease/PTM inhibitors needed; no sonication required.
- **Ready-to-use protocol:** Simply mix Reagents A & B; extraction in as little as 15 min.
- **Ultimate solution for large proteins:** Near-complete extraction; no fragmentation.
- **Assurance and peace of mind:** No loss of protein PTMs such as phosphorylation.
- **All-around performance:** Suitable for mammalian cells and tissues.

Product Name	Cat. #	Size	Price
IntactProtein™ Cell-Tissue Lysis Kit	415M	50 ml	\$120

### Publications

1. [PPAR \$\gamma\$  Acetylation in Adipocytes Exacerbates BAT Whitening and Worsens Age-Associated Metabolic Dysfunction.](#)  
Publication: *Cell*      Product: IntactProtein™ Cell-Tissue Lysis Kit
2. [Salidroside reduces neuropathology in Alzheimer's disease models by targeting NRF2/SIRT3 pathway.](#)  
Publication: *Cell Biosci*      Product: IntactProtein™ Cell-Tissue Lysis Kit
3. [Ventromedial hypothalamic OGT drives adipose tissue lipolysis and curbs obesity.](#)  
Publication: *Advanced Science*      Product: IntactProtein™ Cell-Tissue Lysis Kit

### Customer Testimonials

*"We have tested your **IntactProtein™ Cell-Tissue Lysis Kit** in liver, adipose tissue, and cultured cells. It worked really well! Extracting proteins from fat is always a headache. Your buffer gave us high protein yields and sharp protein bands. We'd like to switch to your buffer"*

----- Columbia University, Dr. Qiang Li, Assistant Professor

### Contact Us

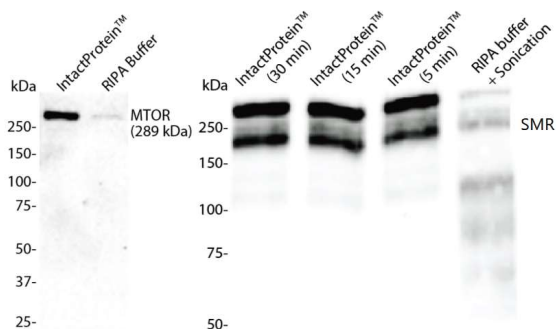
LifeSct LLC

Email: [sales@lifesct.com](mailto:sales@lifesct.com)    Tel: +1-301-890-6420  
Address: 405 East Gude Dr., Suite 205, Rockville, MD 20850

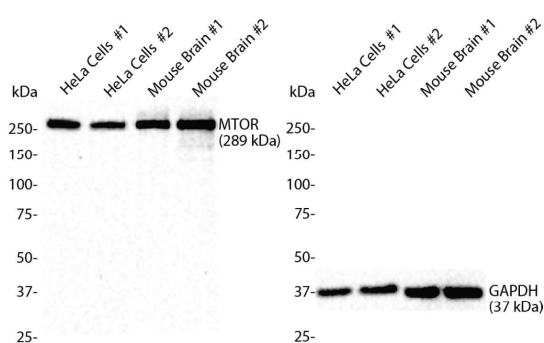


Scan the code  
to read more

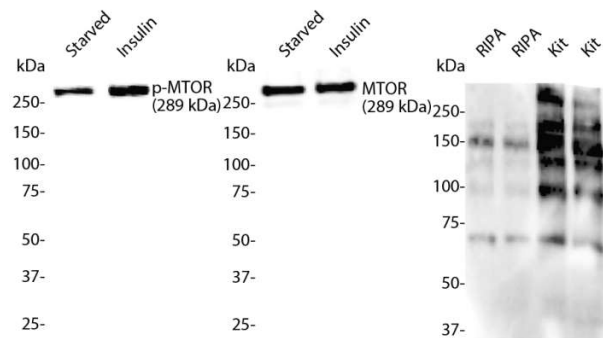
## Case Study



IntactProtein™ lysis kit shows superior performance in extracting large-sized proteins compared to RIPA buffer. (A) HeLa cells were lysed using IntactProtein™ lysis kit or RIPA buffer, and 50 µg of total lysates were subjected to immunoblotting using anti-MTOR (289 kDa) antibody. (B) HT1080 cell lysates (50 µg) were lysed on ice, processed as indicated, and blotted with anti-SMRT (160, 270 kDa) antibody. Note that sonication fragmented SMRT into smaller peptides.



IntactProtein™ lysis kit performs equally well on protein extraction from tissues and cells. (A) HeLa cells and mouse brains (in duplicate) were lysed using IntactProtein™ lysis kit. 50 µg of total lysates were subjected to immunoblotting using anti-MTOR (289 kDa) antibody. (B) The same lysates in (A) were blotted with anti-GAPDH (37 kDa) antibody. Note that IntactProtein™ lysis kit is suitable to extract proteins of large- and small-molecular weights, and from tissues and cells.



IntactProtein™ lysis kit preserves protein post-translational modifications (PTMs). (A-B) HeLa cells were serum starved for 16 h and stimulated with insulin (150 nM) for 5 min before harvest using IntactProtein™ lysis kit. 50 µg of total lysates were subjected to immunoblotting using anti-phospho-MTOR (Ser2448) (A) and anti-mTOR (B) antibodies, respectively. (C) HeLa cells were lysed using RIPA buffer or IntactProtein™ lysis kit. Cell lysates were blotted using anti-O-Linked β-N-acetylglucosamine (O-GlcNAc) (glycosylation) antibody.

## Related Products

Product Name	Cat. #	Size	Price
SuperECL™ Western Blotting Detection Kit	M0013-05	2×50 ml	\$149
SuperECL™ Plus Western Blotting Detection Kit	M0053-05	2×50 ml	\$249
Prestained Protein Marker	C0115	2×250 µl	\$119
Proteinase K	C0113	500 mg	\$339
SuperLumin™ Protein Gel Stain	C0117	1 ml	\$129
Phosphoprotein Gel Stain	C0118	500 ml	\$189
BCA Protein Assay Kit	C0121	500 ml	\$99
FadeStop™ Fluorescent Mounting Medium	270L	25 ml	\$189