

100% Satisfaction Guarantee or Money Back

Are you concerned about your Western blot results? Or wondering whether your immunofluorescent staining is specific or not? LifeSct provides validating antibodies using proprietary gene knockdown (KD) and/or knockout (KO) technologies. We rigorously test the antibodies you are planning to use in your research and strive to satisfy your needs for high-quality antibodies. Here are some examples illustrating how we performed antibody testing.

Key Features

- Validated by both positive and negative (KO or KD) samples
- 100% satisfaction guarantee or money back

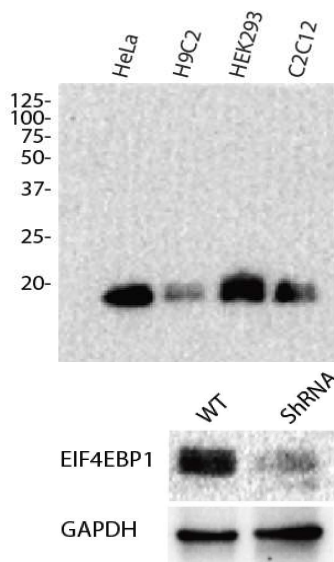


Fig.1. WB results. Top: EIF4EBP1 expression in various cell lines. Bottom: EIF4EBP1 knockdown (KD) in HeLa cells by ShRNA.

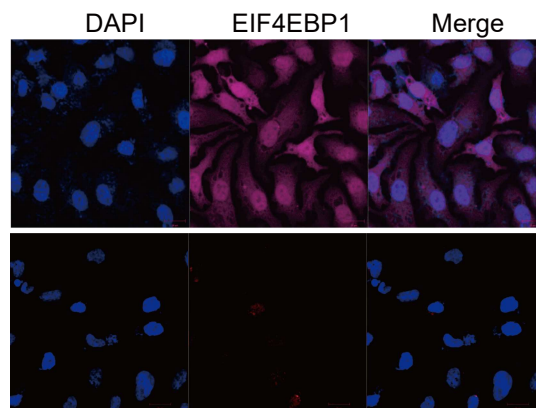


Fig.2. Immunocytochemical staining of HeLa cells with EIF4EBP1 antibody. Top panel: wild type; Bottom panel: shRNA knockdown. Nuclei were stained blue with DAPI.

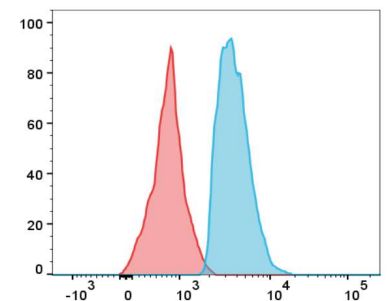


Fig.3. Flow cytometry with WT (blue) and EIF4EBP1 shRNA KD (red) HeLa cells. X axis: EIF4EBP1-Alexa Fluor® 647; Y axis: % cells.

Contact Us

LifeSct LLC

Email: sales@lifesct.com Tel: +1-301-890-6420
Address: 405 East Gude Dr., Suite 205, Rockville, MD 20850



Product Name	Application	Cat. #	Size	Price
Beta-actin mouse monoclonal Ab	WB	1170	20 µl/50 µl	\$120/\$200
Beta-tubulin mouse monoclonal (5G3) Ab	WB	7710	20 µl/50 µl	\$120/\$200
GAPDH mouse monoclonal (2B8) Ab	WB	3130	20 µl/50 µl	\$120/\$200
Beta-actin rabbit polyclonal Ab	WB/IF/F	1171	20 µl/50 µl	\$120/\$200
ASH2-Like rabbit polyclonal Ab	IF	1734	20 µl/50 µl	\$160/\$289
Autophagy Related 7 rabbit polyclonal Ab	WB	1737	20 µl/50 µl	\$160/\$289
Autophagy Related 16 Like 1 rabbit polyclonal Ab	IF	1731	20 µl/50 µl	\$160/\$289
Aurora Kinase A rabbit polyclonal Ab	IF	1761	20 µl/50 µl	\$160/\$289
BMI1 Proto-Oncogene rabbit polyclonal Ab	WB/IF/F	1531	20 µl/50 µl	\$160/\$289
Catalase rabbit polyclonal Ab	WB/IF	1179	20 µl/50 µl	\$160/\$289
Catenin Beta 1 rabbit polyclonal Ab	WB/IF/F	1711	20 µl/50 µl	\$160/\$289
Discoidin Domain Receptor Tyrosine Kinase 1 rabbit polyclonal Ab	WB/IF	2261	20 µl/50 µl	\$160/\$289
Euchromatic Histone Lysine Methyltransferase 2 rabbit polyclonal Ab	WB/IF	2352	20 µl/50 µl	\$160/\$289
Eukaryotic Translation Initiation Factor 4E Binding Protein 1 rabbit polyclonal Ab	WB/IF/F	2361	20 µl/50 µl	\$160/\$289
EPH Receptor A2 rabbit polyclonal Ab	WB/IF	2632	20 µl/50 µl	\$160/\$289
Enhancer of Zeste 2 Polycomb Repressive Complex 2 Subunit rabbit polyclonal Ab	WB/IF	2932	20 µl/50 µl	\$160/\$289
GATA Binding Protein 3 rabbit polyclonal Ab	IF	3173	20 µl/50 µl	\$160/\$289
Hypoxia Inducible Factor 1 Subunit Alpha rabbit polyclonal Ab	WB/IF/F	3321	20 µl/50 µl	\$160/\$289
Janus Kinase 2 rabbit polyclonal Ab	IF	4142	20 µl/50 µl	\$160/\$289
Lysosomal Associated Membrane Protein 1 rabbit polyclonal Ab	WB/IF/F	4161	20 µl/50 µl	\$160/\$289
Minichromosome Maintenance Complex Component 7 rabbit polyclonal Ab	WB/IF	5157	20 µl/50 µl	\$160/\$289
MutS Homolog 2 rabbit polyclonal Ab	WB/IF/F	5732	20 µl/50 µl	\$160/\$289
Nuclear Receptor Subfamily 3 Group C Member 1 rabbit polyclonal Ab	WB/IF/F	5611	20 µl/50 µl	\$160/\$289
Poly(ADP-Ribose) Polymerase 1 rabbit polyclonal Ab	WB	6161	20 µl/50 µl	\$160/\$289
Proliferating Cell Nuclear Antigen rabbit polyclonal Ab	WB/F	6151	20 µl/50 µl	\$160/\$289
Programmed Cell Death 4 rabbit polyclonal Ab	WB/IF	6214	20 µl/50 µl	\$160/\$289
Progesterone Receptor Membrane Component 1 rabbit polyclonal Ab	IF	6311	20 µl/50 µl	\$160/\$289
Ring Finger Protein 2 rabbit polyclonal Ab	IF	7522	20 µl/50 µl	\$160/\$289