

Premium & Cost-effective for PCR & Genotyping

The LiTaq™ DNA Polymerase is a thermostable DNA polymerase that exhibits 5'→3' polymerase activity and 5'→3' exonuclease activity, with no 3'→5' exonuclease activity. The PCR products contain A at the 3'-end and can be directly cloned into T-Vectors. LiTaq™ and LiTaq™ Plus PCR mix are very cost-effective and ideal for genotyping.

| PCR Mix | Fidelity | Extension Rate | 3' end | Amplicon Size | Hot Start | Yield |
|-------------|----------|----------------|--------|---------------|-----------|-------|
| LiTaq™ | 1× | 2 kb/min | A | ≤ 15 kb | No | ++ |
| LiTaq™ Plus | 6× | 2 kb/min | A | ≤ 10 kb | No | +++ |
| LiTaq™ SuFi | 108× | 6 kb/min | Blunt | ≤ 20 kb | Yes | +++++ |

| Product Name | Cat. # | Size | Price |
|--|--------|------|-------|
| 2× LiTaq™ PCR Master Mix (+Dye) | M0024 | 5 ml | \$99 |
| 2× LiTaq™ Plus PCR Master Mix (+Dye) | M0025 | 5 ml | \$139 |
| 2× LiTaq™ HotStart PCR Master Mix (+dye) | M0021 | 5 ml | \$159 |
| LiTaq™ Super-Fidelity PCR Master Mix | M0031 | 1 ml | \$129 |

Publications

1. [Nuclear export and translation of circular repeat-containing intronic RNA in C9ORF72-ALS/FTD.](#)

Publication: *Nature Communications* Product: 2× LiTaq™ PCR Master Mix (+Dye)

2. [Distinct Structures and Dynamics of Chromosomes with Different Human Linker Histone Isoforms.](#)

Publication: *Molecular Cell* Product: 2× LiTaq™ PCR Master Mix (+Dye)

Customer Testimonials

"I'm citing **2× LiTaq™ Plus PCR Master Mix** in my manuscript for a protein engineering paper. It is extremely effective, and I really appreciated the sample. I'll send you a copy as soon as it's published. BTW, LiScript™ Fast RT Master Mix works great, actually I wanted to mention how fast and easy it was to use. The addition of RNase inhibitor and the 5x concentration are perfect for fast experiments."

----- San Diego State University, Dr. Brent White, Postdoc

Contact Us

LifeSct LLC

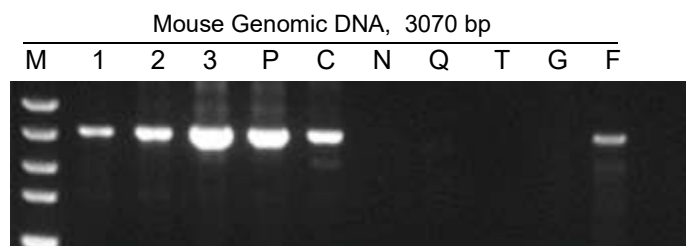
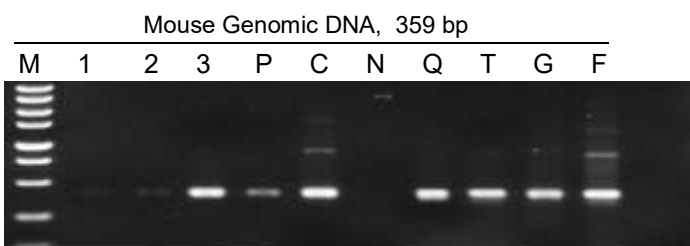
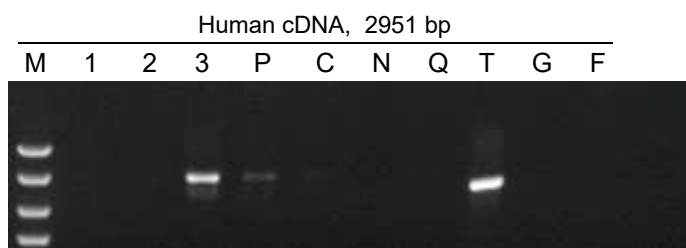
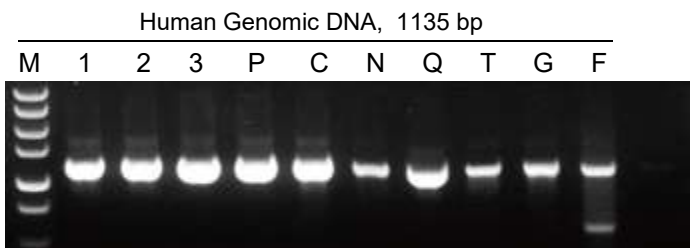
Email: sales@lifesct.com Tel: +1-301-890-6420
 Address: 405 East Gude Dr., Suite 205, Rockville, MD 20850



Scan the code
to read more

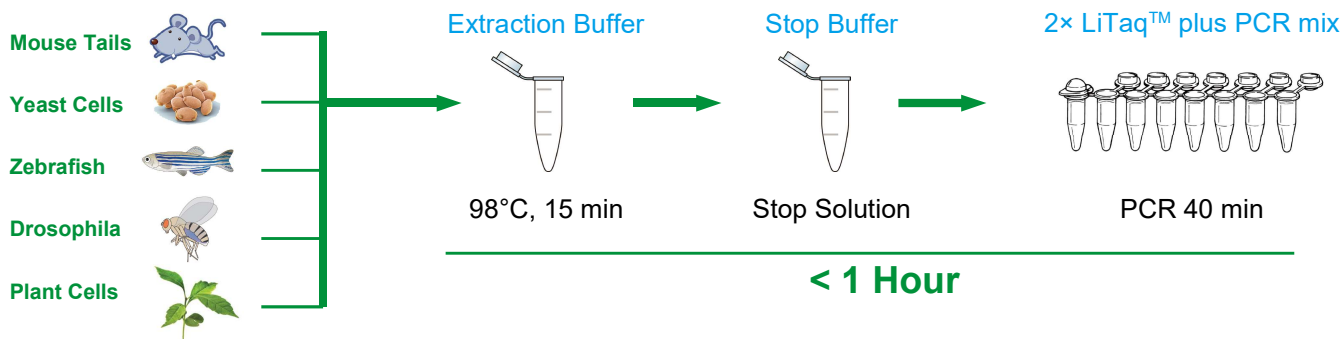
Case Study

LifeSct: **2× LiTaq™ mix (M0024, Lane 1)**, LiTaq™ DNA polymerase (M0023, Lane 2), **2× LiTaq™ plus mix (M0025, Lane 3)**
 Competitors: Brand C, Brand N, Brand Q, Brand T, Brand G, Brand F
 Samples: Human genomic DNA & cDNA, Mouse genomic DNA



From the above results, it can be concluded that for PCR amplification of different length and kind of templates, all four PCR mixes from our company performed superbly. For general PCR, our products have the broadest applicability, best success rate, highest specificity and maximal yield. In the most difficult situations, when all other PCR mixes failed, at least one of our products still worked.

LiDirect™ Lightning Genotyping Kit (M0015)



Our LiDirect™ Lightning Genotyping Kit is designed to quickly extract DNA from various tissue types for subsequent PCR verification. Because mechanical disruption of tissues, organic extraction, column purification, and DNA precipitation steps are unnecessary; the process is amenable to automation and takes less than 1 hour. The Genotyping Kit also does not need hazardous chemicals such as phenol, chloroform, proteinase K or guanidine isothiocyanate.

Related Products

| Product Name | Cat. # | Size | Price |
|--------------------------------------|--------|----------|-------|
| LiDirect™ Lightning Genotyping Kit | M0015 | 400 rxns | \$139 |
| 2× ExSembly™ Cloning Master Mix | M0005 | 10 rxns | \$169 |
| LiQuant™ Ultra Green qPCR Master Mix | M0026 | 500 rxns | \$269 |
| LiGreen™ Plus Nucleic Acid Gel Stain | M0050 | 500 µl | \$119 |
| 100 bp DNA Ladder | M0042 | 1 ml | \$99 |