

High Sensitivity & High Signal Stability

SuperECL™ Plus Western Blotting Detection Kit is a super sensitive, luminol-based enhanced chemiluminescent substrate for the detection of horseradish peroxidase (HRP) on immunoblots. The kit enables femtogram detection of antigen by oxidizing luminol in the presence of HRP and peroxide.

Product	Sensitivity	Signal Duration	Primary Ab Dilution	Secondary Ab Dilution
SuperECL™	Picogram to low femtogram	< 8h	1:1,000-1:30,000	1:50,000-1:200,000
SuperECL™ Plus	High femtogram	< 4h	1:5,000-1:30,000	1:100,000-1:300,000

Key Features

- High sensitivity: Detect low-picogram to high-femtogram amounts of target protein on nitrocellulose or PVDF membrane.
- High signal stability: Incubated blots provide stable signal duration over 4 hour time period.
- Cost-effective: Use much less antibody.

Product Name	Cat. #	Size	Price
SuperECL™ Western Blotting Detection Kit	M0013-05	2×50 ml	\$149
SuperECL™ Western Blotting Detection Kit	M0013-25	2×250 ml	\$399
SuperECL™ Plus Western Blotting Detection Kit	M0053-05	2×50 ml	\$249
SuperECL™ Plus Western Blotting Detection Kit	M0053-10	2×100 ml	\$389

Customer Testimonials

"We tested the SuperECL™ Western Blotting Detection Kit sample, and it did work well, same as the Pierce's one. BTW, your LiPure™ Plasmid Mini Kit works very well, better than others we used. Also I have been trying to convince our purchasing department you are a good supplier to be considered to add to our vendor list."

----- University of Pittsburgh, Dr. Qingde Wang, PI

"I have been using LifeSct's SuperECL Western Blotting Detection Kit for a while and recently also start using LifeSct's SuperECL Plus Western Blotting Detection Kit product. Both products work perfectly and the results are even better than pico and femto level products from the major brand I used before. I am very happy with these wonderful products."

----- NIH/NHLBI, Dr. Pingyuan Wang, Staff Scientist

Contact Us

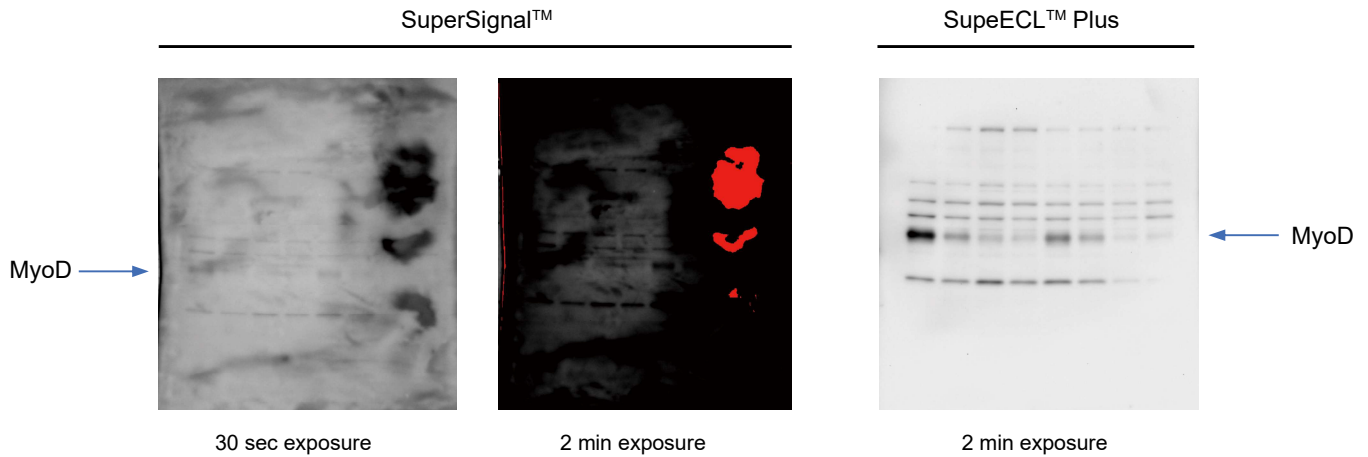
LifeSct LLC

Email: sales@lifesct.com Tel: +1-301-890-6420
Address: 405 East Gude Dr., Suite 205, Rockville, MD 20850

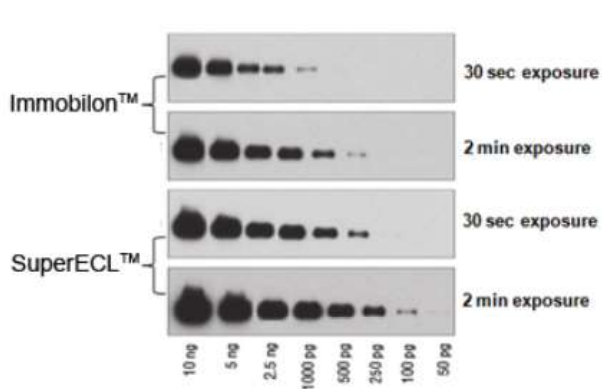


Scan the code
to read more

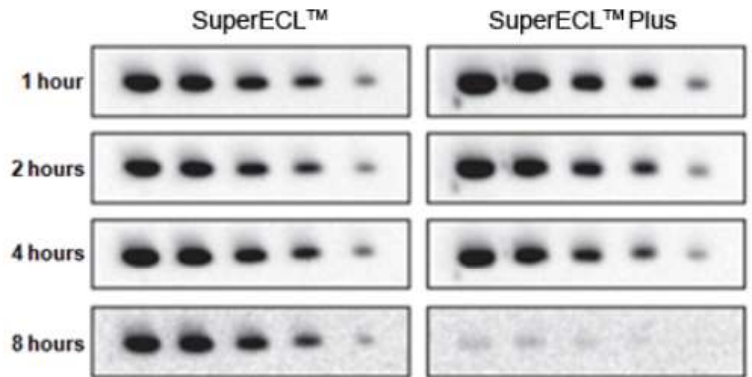
Case Study



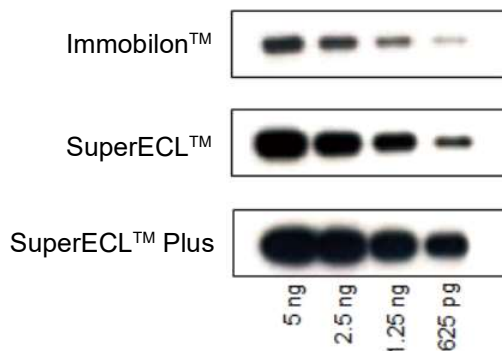
The comparison of SuperECL™ plus and SuperSignal™ (Thermo) on exposure time



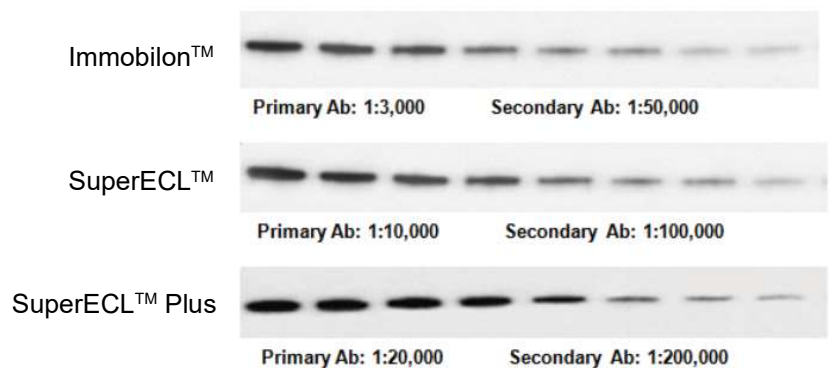
The comparison of exposure time of SuperECL™ with Immobilon™ (Millipore)



The comparison of signal duration of SuperECL™ with SuperECL™ Plus



Comparison of sensitivity of SuperECL™ and SuperECL™ Plus with Immobilon™ (Millipore) western blot substrate



Comparison of antibody dilution of SuperECL™ and SuperECL™ Plus with Immobilon™ (Millipore)

Related Products

Product Name	Cat. #	Size	Price
IntactProtein™ Cell-Tissue Lysis Kit	415M	50 ml	\$120
BCA Protein Assay Kit	C0121	500 ml	\$99