

## Try out Smart Purification



Designed for research labs, TGuide S16 Nucleic Acid Extractor can process up to 16 samples simultaneously. This unique product can automatically purify DNA/RNA from various samples of animal, plant, bacteria, fungi, etc., and extract DNA from agarose gel and PCR products. Super easy to install and operate, reliable, small but efficient and powerful!

### Key Features

- **Time saving and highly efficient:** It can greatly reduce the hands-on operation of nucleic acid experiments, and largely improve the laboratory work efficiency.
- **Tailored for research use:** Although compact in size, it provides automated solutions for most sample types of scientists' interests.
- **Out-of-the-box automation:** It is super easy to use, with prefilled supporting reagent cartridges and preinstalled programs. Overall, the instrument requires little effort on installation, training and maintenance.
- **Competent and reliable:** The upgraded techniques assure you the reproducible extraction of ultrapure DNA/RNA.

#### Super easy to use



#### Compatible with various pretreatment methods



Liquid nitrogen grinding



Mobile electronic grinder



Tissue homogenizer

#### Intuitive touch screen interface Few touch point to start



#### Various applicable sample types



### Contact Us

LifeSct LLC

Email: sales@lifesct.com Tel: +1-301-890-6420  
Address: 405 East Gude Dr., Suite 205, Rockville, MD 20850

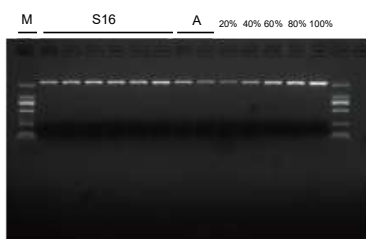


Scan the code to read more

## Case Study

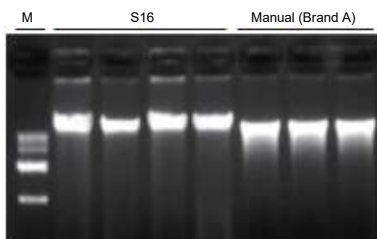
### S16 performs equal or better than manual kits

#### Gel recovery experiment (2 kb)



The recovery rate is consistent and slightly higher than that of the manual column extraction kit (Brand A)

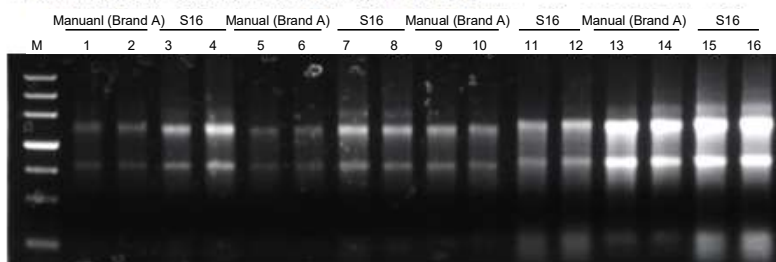
#### Plant DNA extraction experiment



The yield is consistent, and the DNA integrity is better than of the manual column extraction kit (Brand A)

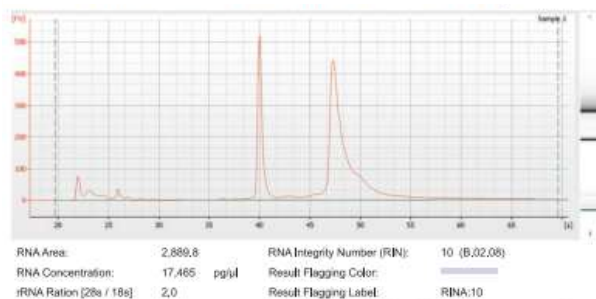


#### Animal tissue RNA extraction experiment



Loading volume: 1  $\mu$ l. The liver was diluted 5 times and loaded. Agarose gel concentration: 1%. Electrophoresis for 20 min at 6V/cm;  
M: DNA Marker 1-4: heart 5-8: liver 9-12: lung 13-16: kidney  
The first two samples of each tissue were extracted by the spin-column based extraction kit, and the last two were extracted automatically by TGuide S16.  
Sample source: CD-1 mice

#### Blood Total RNA Extraction Result Example



S16 was used to extractor RNA from fresh whole blood of mice, and Agilent 2100 was used for integrity detection, with RIN=10

## Recruiting test users

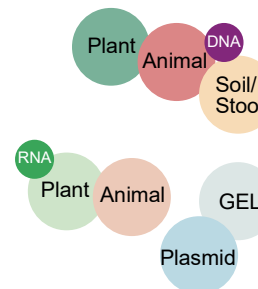
LifeSct provides test instruments and reagent kits, please send email to [support@lifesct.com](mailto:support@lifesct.com) for demo.

## Promotion

When the customer tests the instrument and provides us the report with results and comments, he/she will get the free products for gifts.

We ask you for

- Repeated experiments with more than 3 samples
- Completed test reports with results and comments



## Related Products

Product Name	Cat. #	Size	Price
TGuide Smart Universal DNA Kit	GDP605-DE	48 preps	\$219
TGuide Smart Soil/Stool DNA Kit	GDP613-D-E7	48 preps	\$369
TGuide Smart Magnetic Plant DNA Kit	GDP607-DE	48 preps	\$269
TGuide Smart Blood/Cell/Tissue RNA Kit	GDP661-DE	48 preps	\$389
TGuide Smart Magnetic Plant RNA Kit	GDP662-DE	48 preps	\$429
TGuide Smart Viral DNA/RNA Kit	GDP604-DE	48 preps	\$369