

## Gene Name

Collagen-pan

## Synonyms

Collagen alpha-1(I) chain; Alpha-1 type I collagen; Collagen alpha-1(II) chain; Alpha-1 type II collagen; Collagen alpha-1(III) chain

## Host

Rabbit

## Clonality

Polyclonal

## Gene ID

1277, 1280, 1281, 1289/  
12842, 12824, 12825, 12831/  
29393, 25412, 84032, 85490

## SwissProt

P02452, P02458, P02461, P20908/  
P11087, P28481, P08121, O88207/  
P02454, P05539, P13941, Q9JI03

## Immunogen

KLH-conjugated synthetic peptide encompassing a sequence within the center region of human Collagen-pan. The exact sequence is proprietary.

## Purification

The antibody was purified by immunogen affinity chromatography.

## Buffer

Liquid in 0.42% Potassium phosphate, 0.87% Sodium chloride, pH 7.3, 30% glycerol, and 0.01% sodium azide.

## Storage

Store at -20°C for 12 months. Avoid repeated freeze / thaw cycles.

## Reactivity

Human, Mouse, Rat,  
Bovine, Chicken, Dog

## Application

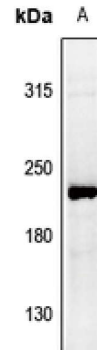
WB (1:500 - 1:1000),  
IHC (1:50 - 1:100)

## Concentration

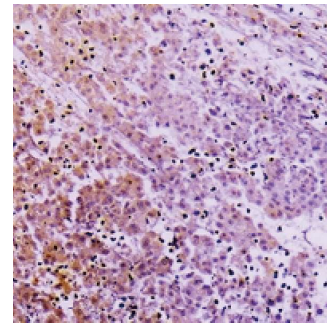
1 mg/ml

## LifeSab™ Collagen-pan Rabbit pAb

Cat. #: AD8571 Size: 50 µl/100 µl



Western blot analysis of Collagen-pan expression in NIH3T3 (A) whole cell lysates.



Immunohistochemical analysis of Collagen-pan staining in human liver cancer formalin fixed paraffin embedded tissue section. The section was pre-treated using heat mediated antigen retrieval with sodium citrate buffer (pH 6.0). The section was then incubated with the antibody at room temperature and detected using an HRP conjugated compact polymer system. DAB was used as the chromogen. The section was then counterstained with haematoxylin and mounted with DPX.